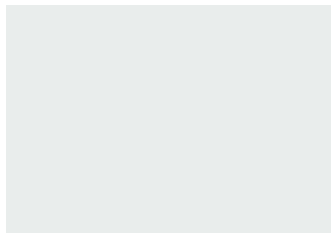


# MetaDefender Optical Diode

## QUICK START GUIDE

### Product Information



### 1 Login into Your Fend Account

Visit <https://www.opswat.com/fend>



### 2 Download the User's Manual

In your Fend account, go to "Support", then choose "Downloads". Download the User's Manual and latest updates.

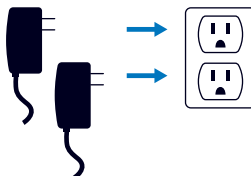


### 3 Unpack the Diode and Accessories



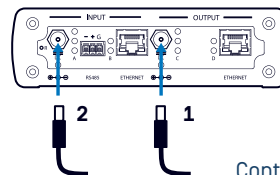
### 4 Power on Diode

Plug both power supplies into wall.



### 5 Power on Diode [Continued]

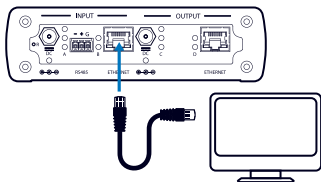
Plug DC jack from power supply into output side first, then input side.



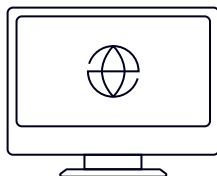
Continued →

**6 Connect Diode to Computer**

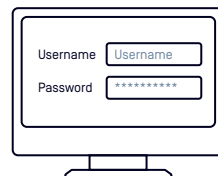
Connect input side of diode to computer with Ethernet cable. Ensure your computer is on the same subnet as the data diode. See User's Manual for details.

**7 Log into the Diode**

Open your web browser and enter the IP address from the "Product Information" section of this card into the address bar.

**8 Enter Username & Password**

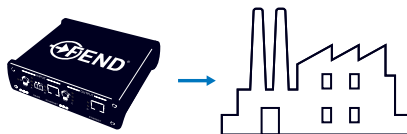
Enter username and password from the "Product Information" section of this card and click "Sign In".

**9 Configure the Diode, then Click "Save & Exit"**

See User's Manual for more information.

**10 Install the Diode**

Connect diode to end-use equipment, and reconnect power. See user's manual for more information.

**Need more information?**

Email us at  
[fendsupport@opswat.com](mailto:fendsupport@opswat.com)  
Or scan to learn more.

