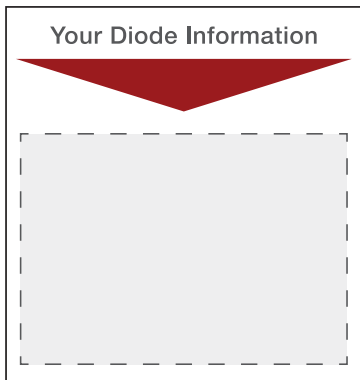




Diode Quick Start Guide



- 1 Login into your Fend Account
Visit <https://app.fend.tech/login>

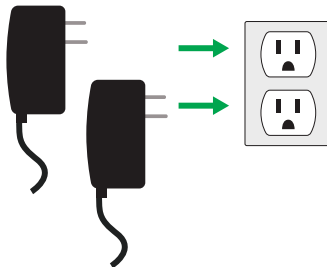


- 2 Download the User's Manual
In your Fend account, go to "Support > Downloads".
Download the User's Manual and latest updates.

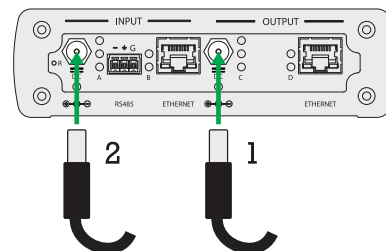


- 3 Unpack the diode and accessories
-

- 4 Power on diode
Plug both power supplies into wall.

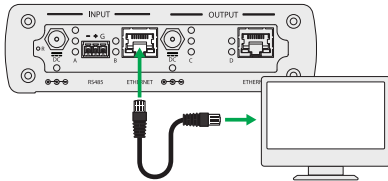


- 5 Power on diode (continued)
Plug DC jack, from power supply, into output side first, and then input side.



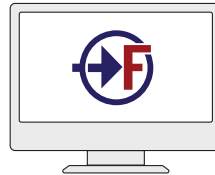
6 Connect diode to computer

Connect input side of diode to computer with Ethernet cable.



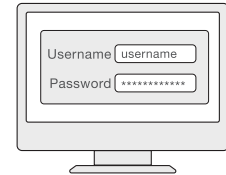
7 Log into the diode

Open your web browser and enter the IP address from the "Your Diode Information" section of this card into the address bar.



8 Enter username and password

Enter the username and password from the "Your Diode Information" section of this card and click "Sign In".



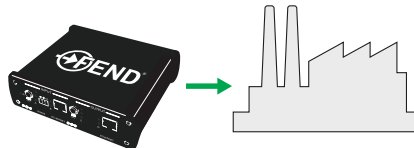
9 Configure the diode, then click "Save & Exit"

See user's manual for more information



10 Install the diode

Connect diode to end-use equipment, and reconnect power. See user's manual for more information



11 Enjoy



Contact Us

Need help? Email us at support@fend.tech